

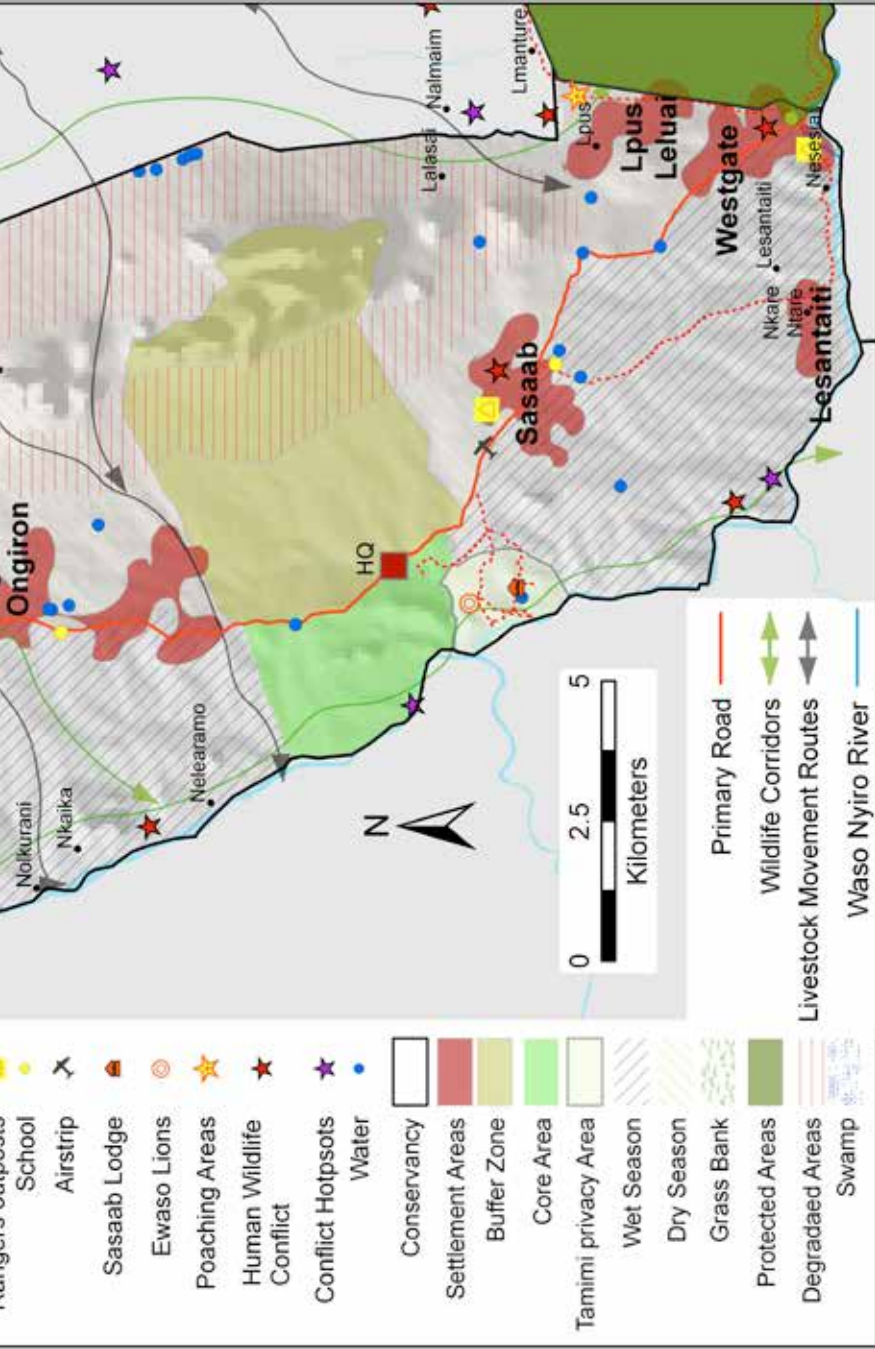
**WEST GATE COMMUNITY CONSERVANCY LTD.**

**CONSERVANCY MANAGEMENT AND  
COMMUNITY DEVELOPMENT PLAN (2017 - 2021)**









# INTRODUCTION

This Conservancy Management and Community Development Plan has been developed by West Gate Community Conservancy with support from the Northern Rangelands Trust. The plan was developed through a participatory process led by the Conservancy Board. The process included the following steps:

- **Background information** - including reference to previous reports, baseline statistics on human livelihoods.
- **Mapping** -participatory and field mapping of key features across the conservancy, development of a conservancy map to visualize the current status and future vision for the conservancy.
- **Board brainstorming session** - to identify the main challenges and long term priorities for the conservancy, and identify key partners and stakeholders for inclusion in the planning process.
- **Consultation with community and key partners** - meetings with community, government and partner organization representatives in all zones of the conservancy, to discuss and develop the goals and objectives.
- **Draft plan** - a draft plan was developed and circulated to Conservancy Management for discussion with the Board to ensure it accurately captured discussions and priorities from community and stakeholder meetings.
- **Final plan** -presented to the AGM for endorsement, publication and dissemination of the plan to partners.

The purpose of this plan is to capture the holistic, long-term vision for community development and conservation success of our Conservancy. It is a tool to:

- Guide the conservancy management in their activities, ensuring they focus on priorities that have been determined by the wider community, conservancy staff and Boards
- Provide continuity of management and hold managers and Boards to account by their members
- Assist with fundraising and developing partnerships, highlighting where additional resources are required
- Meet the requirements for registration of Conservancies under the Wildlife Conservation and Management Act 2013

It is a succinct document that identifies key features and values of the conservancy and sets out the primary issues the conservancy is seeking to address, with a broad vision and objectives. The specifics of how the conservancy will tackle these issues, actions to be taken and resources needed will be captured in more detailed plans for each sector, e.g. land-use and settlement, tourism development, business and sustainability, integrated water resources development, etc. Annual operational plans and budgeted activity plans will be developed by the Conservancy Management and Board at the start of each year. It is a living document that needs to be used, adapted and referred to continually.

### Table of Contents

- **Section 1:** The Conservancy Community
- **Section 2:** Community Development and Conservation Priorities
- **Section 3:** Action Plan and Key Partnerships
- **Section 4:** Implementing the Plan
- **Annex:** Community Development and Conservation Priority Areas and Actions



# SECTION 1.

## THE WEST GATE CONSERVANCY COMMUNITY

Samburu County - Samburu East Sub County - Waso West Ward

WARD	SUB-COUNTY	LOCATION	SUB-LOCATION	ZONES	POPULATION (2009)
Waso West	Samburu East	Waso West	Remot	Remot, Lempaute	1,237
			Naisunyai, Lenkusaaka	Sukuroi, Naisunyai	980
			Ngutuk Ongiron	Ngutuk Ongiron	697
			Lpus Leluai	Sasaab, Lpus Leluai	1,750
<b>TOTAL</b>					<b>4,664</b>

### The community

- **Ethnicity:** Our people are predominantly Samburu, semi-nomadic pastoralists, owning herds of cattle, sheep and goats.
- **Land area and ownership:** Community Land; Ngutuk–Ongiron Group Ranch. Total area 36,671 hectares with a core conservation area of 890 ha and a buffer zone of 1,200 ha.

### Natural assets

- **Water resources:** The main water source within West Gate Conservancy is the semi-permanent Waso Nyiro River that has been the main source of water for livestock, wildlife and the people for many years. Other water sources include boreholes, hand pumps, dams and water pans at: Remot, Lengusaka, Ngutuk Ongiron, Lpus Leluai, Kiltamany, Loijuk and Sasaab.
- **Trees and forest products:** West Gate Conservancy is a mix of bush and grassland with diverse plant species. The main tree species include various *Acacia* and *Commiphora* sp e.g. Lchurai *Acacia reficiens*, Ltepes *Acacia tortilis*, Ildepe *Acacia nubica*, Lderkesi *Acacia senegal*, Sesiai *Acacia elat*, Siokotei *Salvadora persica*, Lcheningiro *Commiphora africana*, Samanderi *Commiphora* sp. Some non-endemic invasive species including *Prosopis juliflora* (mathenge), *Opuntia* sp. (prickly pear) are also present.
- **Key wildlife species and habitats:** Key wildlife species include Grevy's zebras, reticulated giraffes (which have recently returned to the Conservancy after being absent for many years), lions (which have recently become permanently resident in the Conservancy), impala, African wild dogs, elephants, Grant's gazelles, leopards, cheetah, Lesser and Greater kudu, and warthogs among others. The Conservancy hosts one of the

highest numbers of critically endangered Grevy's Zebra remaining in the world. These are mainly found around the Namanyaroboo area in the Northern part of the Conservancy, however, due to large-scale rangeland degradation, Grevy's zebra numbers are declining in Westgate Conservancy as a whole.

- **Grassland:** The conservancy Grazing Committee governs the grazing patterns both in wet and dry seasons and has been using principles of Holistic Management (HM) and planned grazing since 2010. The buffer zone has been actively managed as an HM and rangeland rehabilitation site for several years. Dry season and wet season grazing blocks have been established in each zone across the conservancy. West Gate has placed strong emphasis on grazing management and has been able to show good recovery of perennial grasses and reduced bare soil in some areas.

## Physical assets

- **Roads:** The main road stretches from Lpus Leluai to Kiltamany. There are several other roads which connect to Lerata, Samburu National Reserve, Kalama Conservancy and all villages in the Conservancy. All the roads are murrum with some areas impassable during the wet season.
- **Airstrip:** The conservancy has one airstrip at Sasaab..
- **Other infrastructure:** Business premises, schools, health centres and churches are located at Ngutuk Ongiron, Lpus leluai, Kiltamany, Remot, Lempaute and Naisunyai. The Conservancy has a Headquarters including ranger's accommodation, offices, stores and a meeting room; and 5 ranger outposts.
- **Tourism and Research Organisations:** Sasaab Lodge is a luxury tourism facility situated within the Conservancy, owned and operated by TAMIMI Kenya Ltd. There are several campsites which are operated by the Conservancy. Two research organizations, Ewaso Lions and Grevy's Zebra Trust, have Research Camps within the Conservancy.

## Human assets

- **Health:** The most prevalent diseases and conditions in the area are malaria, measles, TB, anemia, trachoma and HIV/AIDS. There is limited health and sanitation awareness, few health facilities. The residents receive health treatment from traditional herbalists, and health centers. Health workers include midwives, traditional birth attendants, community

health workers and mobile clinics. Several different organizations provide health outreach support.

- **Nutrition:** The community's staple food is maize flour supplemented by other food such as milk, githeri, meat and blood.
- **Education:** The conservancy has 6 Primary schools and 7 nursery schools that are located in Remot, Naisunyai, Ngutuk Ongiron and Lpus Leluai, there are no secondary schools and literacy levels are low.

### Social assets

- **Institutions:** Community groups exist that are instrumental in the development of the community and the conservancy at large. These groups (Youth and Women Groups) exist in Lpus Leluai, Kiltamany, Ngutuk, Remot, Naisunyai and are engaged in various small business including livestock sales and bead work.

### Livelihoods

- **Livestock:** Majority community members (66%) earn their living through sale of livestock or livestock products.
- **Employment:** casual or permanent employment provides income for 13% of residents through the Conservancy, NGOs (Feed the Children, Ewaso Lions, Grevy's Zebra Trust), tourism (Sasaab Lodge).
- **Small Business:** 17% of community members engage in small businesses like selling of honey, sand harvesting in groups, operating boda boda and running small shops.

### Conflict

Conflict between people occurs mainly at the boundaries of the conservancy. The main causes of conflicts are cattle rustling, retaliatory attacks as a result of livestock raids, and competition for water and pasture during drought. Human-wildlife conflict by predators on livestock is also an issue, occasionally there is also conflict with elephants at water sources during the dry season.



## Drought and vulnerability

- **Indicators:** Dry winds, delayed rains which is periodic. Rainfall patterns and drought are becoming increasingly variable and uncertain. The Ewaso river is dry for several months of the year and flooding of the river is becoming more frequent; in the past this river flowed throughout the year. The main cause of water decline in the Ewaso Nyiro River is uncontrolled upstream abstraction in Laikipia.
- **Gender:** Women, children and elderly have a higher vulnerability to drought especially when men and youth are away from settlement areas with the livestock in search of grazing for long periods of time.



## SECTION 2. COMMUNITY DEVELOPMENT AND CONSERVATION PRIORITIES

Priorities for West Gate Community Conservancy:

- Rangeland Management
- Education
- Health
- Water
- Infrastructure
- Security
- Wildlife Conservation and Management
- Enterprise Development & Tourism

GOALS	IMPACT IN 5 YEARS
Goal One <b>Improving the condition of our rangelands</b>	<ul style="list-style-type: none"> <li>● Rehabilitation of degraded areas</li> <li>● Clearing of invasive species</li> <li>● Planned and coordinated grazing patterns</li> <li>● Improved settlement plans</li> </ul>
Goal Two <b>Improving services for community development</b>	<ul style="list-style-type: none"> <li>● Improved health and access to health facilities</li> <li>● Availability of water for people and livestock</li> <li>● Improved and access to good education</li> <li>● Improved planning of infrastructure</li> <li>● Improved communication</li> </ul>
Goal Three <b>Building peace and security</b>	<ul style="list-style-type: none"> <li>● Peaceful co-existence between communities and clans within and neighboring West Gate</li> <li>● Enhanced security for people and wildlife</li> </ul>
Goal Four <b>Conserving wildlife</b>	<ul style="list-style-type: none"> <li>● Reduced human-wildlife conflict</li> <li>● Reduced poaching of all wildlife species</li> <li>● Reduced displacement of wildlife by livestock</li> <li>● Key wildlife corridors and habitat refuges for wildlife maintained</li> <li>● Increased wildlife diversity and numbers</li> <li>● Wildlife able to access water</li> </ul>
Goal Four <b>Growing our economy &amp; building financial sustainability</b>	<ul style="list-style-type: none"> <li>● Improved livestock production and sales</li> <li>● Increased conservancy and household income from Tourism and Livestock sales</li> </ul>

## SECTION 3.

# ACTION PLAN AND KEY PARTNERSHIPS

GOAL	ACTION	PARTNERS
<b>1. Improving the condition of our rangelands</b>		
Rangeland rehabilitation, grazing and settlement plans	<ul style="list-style-type: none"> <li>● Rehabilitation of degraded areas through clearing invasive species, gully healing and application of mobile bomas</li> <li>● Develop and supporting both wet and dry season grazing plans</li> <li>● Develop and enforcing grazing by-laws in the entire conservancy</li> <li>● Develop community settlement plan and ensure impact of development projects on wildlife and rangelands are considered and mitigated</li> <li>● Creating community awareness on grazing and settlement plans</li> </ul>	NRT GZT Samburu County
<b>2. Improving services for community development</b>		
Water and sanitation	<ul style="list-style-type: none"> <li>● Improve governance and management of water projects</li> <li>● Develop capacity of Conservancy for water management</li> <li>● Improved repair and servicing of water systems</li> <li>● Increased access to clean water in all settlements through protection of catchment areas</li> <li>● Careful development of water infrastructure to ensure no increase in conflict with wildlife</li> </ul>	Samburu County Samburu Project Red Cross
Health	<ul style="list-style-type: none"> <li>● Construct toilet blocks in all settlements</li> <li>● Upgrade existing health facilities and construct additional facilities in additional settlements</li> <li>● Establish a mobile clinic &amp; ambulance</li> </ul>	Samburu County CDF Sasaab Lodge
Education	<ul style="list-style-type: none"> <li>● Lobby for importance of sending children to school</li> <li>● Upgrading existing primary schools</li> <li>● Improve and construct sanitation blocks in the existing pre-schools and primary schools</li> <li>● Increase bursaries available to students</li> <li>● Establishment of secondary school in Ngutuk Ongiron (ensure wildlife corridors and refuges not affected)</li> <li>● Employment of more teachers for pre-school and primary</li> </ul>	Samburu County Save the Children Ewaso Lions GZT NRT CDF

GOAL	ACTION	PARTNERS
Infrastructure & Communication	<ul style="list-style-type: none"> <li>● Improving and maintaining existing roads</li> <li>● Coordinated construction of permanent structures in all shopping centers, security outposts and tourism sites</li> <li>● Additional radios for improved communication in the conservancy</li> <li>● Lobbying with communication companies to construct network boosters</li> </ul>	Samburu County Safaricom Airtel Orange NRT

### 3. Building peace and security

Improved security within and around West Community Conservancy	<ul style="list-style-type: none"> <li>● Equipping rangers with firearms and equipment</li> <li>● Employment of more security rangers</li> <li>● Creating awareness and sensitization on anti-poaching, cattle rustling and road banditry</li> <li>● Holding peace events - marathon, sports events</li> <li>● Construct security outposts at conflict hotspots</li> </ul>	NRT LEWA KWS Samburu County
--	--	--------------------------------------

### 4. Conserving wildlife

Increasing wildlife diversity and reducing poaching	<ul style="list-style-type: none"> <li>● Human-wildlife conflict mitigation including awareness and predator-proof bomas</li> <li>● Community meetings on importance of conservation, anti-poaching and human-wildlife conflict</li> <li>● Creation of safe habitat refuges for carnivores to reduce human-carnivore conflict</li> <li>● Strengthening the security team through training</li> <li>● Combining patrol efforts with neighbor conservancies</li> <li>● Reduce livestock encroachment to the core area</li> <li>● Ensure wildlife have access to water points in the dry season</li> <li>● Ensure key wildlife corridors are maintained with no encroachment of settlements</li> </ul>	KWS NRT Samburu County GZT Ewaso Lions
---	---	--



GOAL	ACTION	PARTNERS
<b>5. Growing our economy &amp; building financial sustainability</b>		
Tourism	<ul style="list-style-type: none"> <li>● Implementation of recommendations from West Gate Financial Sustainability Plan</li> <li>● Development of West Gate Tourism Management Plan</li> <li>● Diversify and expand tourism products and facilities e.g. cultural manyattas, camp sites</li> <li>● Expand number of tourism beds within the Conservancy</li> <li>● Develop new tourism partnerships</li> </ul>	NRTT Sasaab Lodge
Livestock productivity & sales	<ul style="list-style-type: none"> <li>● Additional and improved livestock markets</li> <li>● Improved veterinary support</li> <li>● Improving production through selective breeding</li> <li>● Construction of a vet chemist at Lpus Leluai to improve access to genuine vet drugs</li> </ul>	NRTT Samburu County Sidai
Carbon Trading	<ul style="list-style-type: none"> <li>● Support NRT Soil Carbon Project to provide conservancy income from carbon as a result of improved rangeland management</li> </ul>	NRT



## SECTION 4.

# IMPLEMENTING THE PLAN

### West Gate Community Conservancy

- West Gate Community Conservancy was registered as a Trust in 2004 and later a not-for-profit company in 2013, Registration Number CPR/2013/123581.
- The Conservancy will be responsible for implementing this plan which has been developed through a participatory process involving all members of the conservancy or their representatives.
- The conservancy has an elected board representing all the zones within Ngutuk-Ongiron Group Ranch which makes up the West Gate Conservancy. The board appoints and oversees a work force of 40 employees which including manager, rangers, radio operators, gate-keepers, drivers, administrative, rangeland management and maintenance staff.
- Prior to the establishment of the conservancy our area was a hotspot for elephant poaching and insecurity, our communities lived in fear for their lives, however since the conservancy was established security has improved for people and elephants have returned to the area in large numbers.
- Security is critical for our development and the conservancy rangers are on a daily patrol within and around West Gate conservancy. Conflict over livestock and natural resources is a large part of the history of our communities so cooperating with our neighboring communities is vital to maintaining security.
- West Gate Conservancy actively supports peace-building through its board, peace committee and engagement of youth in various activities including an annual Sport for peace Event. The approach is to build trust through dialogue and shared experiences, and create a forum for peace and conflict resolution.

### Building Resilience

West Gate Conservancy through this plan will build greater resilience to climate change impacts and reduce vulnerability to drought, in our community and in our environment. This will be achieved through building social capacity and better governance through the conservancy institutions; investing in our people (health, water and education); maintaining peace and security; growing income with stronger business in tourism, livestock markets and other investments; and improving the productivity of our rangelands and wildlife.

## Partnerships

As the West Gate Community, we are not able to fully implement this vision and plan on our own. We will rely on close partnerships with Samburu County Government, NRT, KWS, GZT, EWASO LIONS and other NGOs, as well as on Investments by commercial partners including Tamimi Kenya/Sasaab Lodge. These partnerships, identified in the Action Plan above, will bring mentoring support, grant funding, technical expertise, training and investment. As relationships with key partners develop, detailed operational plans, budgets and timetables will be developed with each partner. The Conservancy management team will lead in developing funding proposals, partnerships and investments for key priorities identified in this plan.

## Benefit-sharing amongst members of West Gate Conservancy

- **Community Funds:** The community holds a social fund, generated from tourism revenue , NRTT’s Livestock programme and donations for other community projects .The decisions on the spending priorities are made at the AGM with all conservancy/community members present. The Community account is audited on an annual basis and expenditure of funds declared at the AGM.
- **Employment:** All conservancy employees are recruited from the local community, except where special technical expertise or qualifications are required, in a transparent process equitably shared between members of Ngutuk-Ongiron Group Ranch and the 7 settlement zones.
- **Communication:** The AGM remains the most important event for community-wide communication; the Board, sub committees and conservancy staff also play an important role in raising awareness and informing our community about decisions made.

## Measuring impacts and creating sustainability

- **Measuring success:** With the support of other partners the West Gate Conservancy has established or is setting up a range of monitoring tools for measuring the status of wildlife, rangelands and community livelihoods and perceptions .These are Conservancy-led monitoring systems which will be used to measure impacts of this plan.
- **Sustaining progress:** With clear plans, effective partners and increasing commercial activities in West Gate Conservancy, we expect to sustain the progress of this plan in future.

## Table of Community Development and Conservation Priority Areas:

GOAL	AREA	PRIORITY
<b>Goal 1: Improving the condition of our rangelands</b>		
Degraded areas	Nolotoro, Noloikampan, Lesiteti, Lalasai	Rangeland rehabilitation
Wet season grazing areas	Naibelibeli, Naisunyi, Sukuroi, Ngutuk, Nchoroi, Nelearameo, Koonyek, Nosuyiani	Improve planned grazing and establish grazing plans and by laws
Dry season grazing areas	Lalasai, Nenyirao, Lempaute, Nolotoro, Lpus Leluai, Lesiteti, Namanyorobo, Lewerer, Remot, Lmot lengop, Narapai	Increase awareness and wide spread consensus on grazing plans among West Gate community and neighbouring communities
<b>Goal 2: Improving services for community development</b>		
Water	Lemparas	Dam
	Raraso	Dam
	Loporintai	Shallow Wells
	Ngutuk Ongiron	Repair/Service of water systems/boreholes
Health	Sasaab	Sand dam
	Naibelibeli	Dam
	Lpus Leluai	Elevate dispensary to health center/Ambulance
Education	Kiltamanyi	Staffing ,Sanitation blocks
	Ngutuk Ongiron	Sanitation blocks
	Remot	Equipments, sanitation
Education	Ngutuk Ongiron	Establish secondary school
	Lpus Leluai	Establish training college
	Sasaab	Build water tanks ,sanitation blocks and establish primary and nursery schools
	Naisunyi, Sakuroi, Remot	Upgrading existing primary schools
Education	Remot, Lplus leluai, Ngutuk Ongiron	Bursary funds/ text books and teachers payment



<b>GOAL</b>	<b>AREA</b>	<b>PRIORITY</b>
<b>Goal 3: Building peace and security</b>		
Water	Lpus Leluai	Police Posts (ASTU) administration police
	Lengusaka	Police Posts / Conservancy Rangers
	Kiltamany	Conservancy Rangers
Security Access Roads	Loijuk-Lerata; Lengusaka-Lpus leluai	Improving existing roads
	Lpus Leluai-Kiltamany; West Gate-Loijuk	Establish new roads
<b>Goal 4: Conserving wildlife</b>		
Human Wildlife Conflict areas	Loijuk, Nasunyi, Lolua, Kiltamany, Lesantaiti, along Ewaso Nyiro River	Reduce human wildlife through mitigation measures and awareness; creation of safe habitat refuges for carnivores
Key wildlife areas	Loijuk, Sasaab, Lesiteti, Rararo, Lesantaiti, Naguoworu	Ensure security of wildlife through effective anti-poaching patrols
	Naibelibeli	Ensure grazing plans enforced and displacement of wildlife minimised
Key poaching areas	Noloikampan, Lpus leluai	Ensure security of wildlife through effective anti-poaching patrols and community awareness
Wildlife corridors	Nelearamo-Loijuk Lpus-Rararo Remot-Lmoti Lewerer-Lesantaiti Ntabaas-remot-Naguoworu Core area-Buffer zone	Ensure settlements do not block wildlife corridors
<b>Goal 5: Growing our economy &amp; developing financial sustainability</b>		
Increase & diversify tourism	Lesiteti Lengusaka Lpus Leluai Napurpuruna	Wildlife area viewing point Rock climbing and campsites Cultural center, campsites Picnic sites



# ACKNOWLEDGMENTS





West Gate Community Conservancy  
P.O. Box 610  
Isiolo 60300, Kenya

[westgate@nrt-kenya.org](mailto:westgate@nrt-kenya.org)